

CLUB OFFICIALS

November 1989

PRESIDENT

GRAHAM REELEY  
52 KIRWAN WAY  
LOCKRIDGE WA 6054  
Phone 279 3914

TREASURER

ERIC PARKER  
9 MINILYA ST  
INNALOO WA 6018  
Phone 446 8249

SECRETARY & AAA DELEGATE

SHARON OSBORNE  
3 ROWAN PLACE  
MULLALOO WA 6025  
Phone 401 9035

VICE-PRESIDENT

DENNIS STIGLMAYER  
5 BRAY PLACE  
BEECHBORO WA 6025  
Phone 279 7946

IMMED PAST PRES

GEORGE HOLMAN  
89 CLONTARF ST  
SORRENTO WA 6020  
Phone 447 5106

TAX CONSULTANT

G RUSSELL  
STE 1/11 KING EDWARD RD  
OSBORNE PARK WA 6017  
Phone 244 2443

FIELD DAY OFFICER

IAN COOK  
12 GRODYER WAY  
PADBURY WA 6025  
Phone 401 9461

ASST F.D.O.

HEATH HOLMAN  
43 KARRINYUP RD  
TRIGGS WA 6029  
Phone 447 8232

RECORDER

DAVE MAXTED  
92 CLONTARF STREET  
SORRENTO WA 6020  
Phone 448 1732

DRY CASTING OFFICER

MALCOLM HEAD  
18 HALVORSON ROAD  
MORLEY WA 6062  
Phone 276 4809

ASST D.C.O.

MALCOLM KELLY  
22 LINTHORNE WAY  
BALGA WA 6061  
Phone 342 6472

AAA DELEGATE

PETER OSBORNE  
3 ROWAN PLACE  
MULLALOO WA 6025  
Phone 401 9035

REEL TALK EDITOR

FRANK SUTTON  
63 EDWARD STREET  
BEDFORD WA 6052  
Phone 271 4916

ASST EDITOR

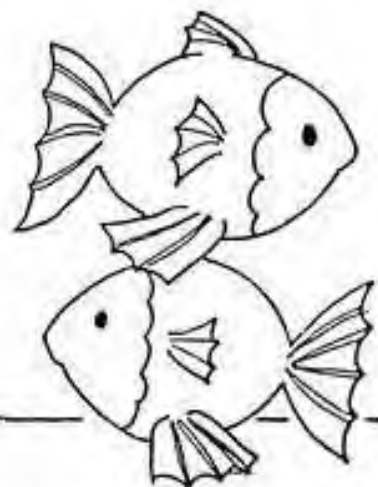
ERIC BOMBARDIERI  
1 SIMEON CLOSE  
KALAMUNDA WA 6076  
Phone 454 7057

LIBRARIAN

BRUCE BENNETT  
7 PINWOOD GREEN  
UPPER MIRRABOOKA  
WA 6061  
Phone 342 5229

PROPERTY OFFICER

JOHN REELEY  
24 PAPERBACK WAY  
MORLEY WA 6062  
Phone 377 4834



LIFE MEMBERS

D. BROWN  
D. EDWARDS  
E. PARKER

J. STRONG  
V. DAVIES

B. KLEIN  
G. HOLMAN

N. KNIGHT  
L. DUNN

PAGE TWO

---

CLUB ETIQUETTE

MEETINGS

The monthly GENERAL MEETING is usually held on the second Wednesday of each month at 8pm. All members should endeavour to attend the meeting so as to keep up with club matters.

DRYCASTING

Casting is usually conducted on the first Sunday of each month. Instruction is given to all new members and a competition is conducted to improve and maintain the standard of our members casting.

FIELD DAYS

These normally follow each general meeting on the ensuing weekend. It is compulsory for anglers to attend both the sign-on and the weigh-in. Anglers who cannot attend the sign-on for work or other unavoidable reasons may make prior arrangements for a late sign-on. However, only under very exceptional circumstances will failure to attend weigh-ins not be penalized with the loss of points acquired during that field day.

It is the Field Day Officer's duty to inform the committee of any anglers who fail to attend the weigh-in. It is the committee's duty to decide what action is to be taken.

Disputes may be taken to the committee.

Entries for Game Fish Badge, Club Records and Open Fishing Competitions must be lodged with the recorder within 30 days of capture.

COMMITTEE MEMBERS

Please notify the Treasurer and Reel Talk Editor of any change of address or phone number.

GENERAL ETIQUETTE

If you intend to resign from the club a letter of resignation should be forwarded to the Secretary.

Please assist the Treasurer by paying your subscription within 28 days of the Annual General Meeting.

Arrears of 3 consecutive months may cause forfeiture of membership.

MEMORANDA



NEXT GENERAL MEETING

NEXT GENERAL MEETING

WHERE: ..... DIANELLA COMMUNITY CENTRE  
LIGHT STREET, DIANELLA

WHEN: ..... WEDNESDAY 8TH NOV.

INSTRUCTION: .....

NEXT CASTING DAY

WHERE: ..... YOKINE RESERVE

WHEN: ..... SUNDAY 5th NOV.

EVENTS: ..... 112 GRAM LEVEL LINE  
50 GRAM LEVEL LINE  
D/H ACCURACY  
S/H ACCURACY



NEXT FIELD DAY

WHERE: ..... TO BE DECIDED AT MEETING

WHEN: ..... 11TH & 12TH NOVEMBER.

TIMINGS

SIGN-ON: ..... SWAN RIVER HAS BEEN  
SUGGESTED

WEIGH-IN: .....

FOLLOWING FIELD DAY

WHERE: ..... TO BE DECIDED



NEXT COMMITTEE MEETING

WHERE: ..... DIANELLA COMMUNITY CENTRE  
LIGHT STREET DIANELLA

WHEN: ..... WEDNESDAY 15TH NOV.

PAGE FOUR

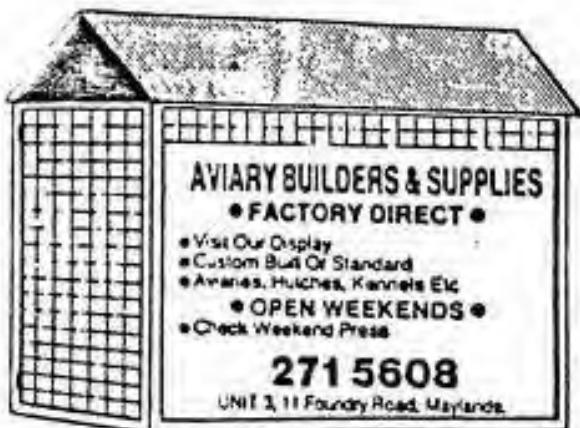
# POSITION VACANT...

## *Social Organiser*

AT THE ANNUAL GENERAL MEETING OUR NEW PRESIDENT GRAHAM REELEY WAS UNABLE TO OBTAIN A SOCIAL ORGANISER FROM THE MEMBERS PRESENT. THIS IS NOT A GOOD POSITION FOR OUR CLUB TO BE IN AS SOCIAL ACTIVITIES ARE A VERY IMPORTANT PART OF OUR CLUB - NOT TO MENTION THE FUND-RAISING. IF YOU ARE INTERESTED RING GRAHAM AND LET HIM KNOW. THE OTHER ALTERNATIVE IS TO CO-OPT A CLUB MEMBER TO DO THE JOB FOR A THREE-MONTH PERIOD AND IF YOU ARE ASKED PLEASE DON'T REFUSE!! GIVE IT SOME THOUGHT.

### JANUARY FIELD DAY

At the last committee meeting a recommendation was made that the January Field Day be changed from the long weekend to be run in conjunction with the Mandurah 500. This will be voted on by the members at the next meeting. If you are interested in attending the January field day make sure you attend the November meeting and express your feelings.



**AVIARY BUILDERS & SUPPLIES**  
● **FACTORY DIRECT** ●  
● Visit Our Display  
● Custom Built Or Standard  
● Aviaries, Hutches, Kennels Etc  
● **OPEN WEEKENDS** ●  
● Check Weekend Press  
**271 5608**  
UNIT 3, 11 Foundry Road, Maylands.



### **MORLEY GLASS**

- Household Aluminium Windows & Doors
- All Types of Glass Cut While You Wait
- Windows ● Coloured Glass
- Shower Screens ● Mirrors

ALL AREAS

**276 1062**

33 RUDLOE RD. MORLEY

PRESIDENT'S REPORT

The scales are still missing. If any member has them please return them to the club or ring Ian Cook who will pick them up.

The Committee Meeting was held at Frank Sutton's place on Thursday, at which it was decided the Christmas Party would be held on Sunday 10th December, start 2.00p.m. Salads and meat packs will be supplied at \$5.00 per head. So you will bring only your beer and spirits if required. Soft drinks and lollies will be supplied for the children.

Sorry to hear Eric Parker's dad passed away last week. The club sends their Deepest Sympathy to the family.

The club is running a Christmas Hamper Raffle. Will every club member please bring in one or two tins of anything to go into the hamper. Tickets will be sold to members and their families and friends.

City of Stirling is having a night on the 18th, Mal Kelly and Bruce to attend the meeting.

If any members would like to go Deep Sea Fishing with Shakari Tours and Fisheries see me and I will see what can be done on a trip. The boat takes 6 people and bait and all gear is supplied. Lunch and afternoon tea are also included. It is \$65 per head for the day.

George still has two windcheaters left. They are size 22. Ring George.

We still require a Social Organiser. The club cannot run any social events without him or her to organise it. So Please will someone come forward and do the job.

As you all know some members are down at Esperance this week. Hope they have some good fishing and other good stories to tell when they get back.

GRAHAM REELEY

THANKS

Eric Parker wishes to thank all members for phone calls, cards and attendance at the funeral of his father.

# ABALONE SEASON '89



The metropolitan abalone season applies between Moore River and Cape Bouvard

## Open season

The 1989 metropolitan abalone season opens on Saturday 14 October at 6 am and closes on Sunday 24 December at 10 am.

## When to fish

Weekends only. Inside Marmion Marine Park, or within 800 m of the mainland and Penguin Island, you may only fish between 6 a.m. and 10 a.m.

## Where to fish

The metropolitan abalone season applies between Moore River and Cape Bouvard. The Waterman Reef Observation Area is closed all year.

## Bag limit

Each person fishing may take up to 20 abalone/day.

## Divers

Abalone may not be taken using compressed air breathing gear between Moore River and Cape Bouvard.

## Minimum size

6 centimetres shell length.

## De-shelling

De-shelling (shucking) is not permitted within 200 metres of the beach.

## Why an abalone season near Perth?

ROE'S ABALONE are common on in-shore reefs throughout south-west W.A. These algae-feeding molluscs take about two years to reach the legal size of 6 cm, but when mature they breed prolifically. Females four or five years old may each release up to two million eggs every winter.

When early morning easterlies flatten the swell, and low tides expose the limestone reefs, abalone are easy to find in reef crannies and under the lips of rocky outcrops.

The number of people fishing for abalone has greatly increased recently, and in heavily fished areas, such as Perth's reefs, abalone stocks can become depleted.

Bag limits and legal sizes, as long as people stick to them, are usually enough to protect the abalone from depletion, but near Perth the recreational fishing pressure from the large population is so great that a closed season has been introduced as well.

Without the closed season, and the other fishing rules, the reefs would be rapidly stripped of most of the accessible abalone.

These fishing rules protect the breeding population of abalone which maintains the stocks, but they also help to share the catch amongst the large number of people who enjoy a feed of fresh abalone each year.

## Abalone Fishing Calendar 1989

5 = open fishing days

OCTOBER						
S	M	T	W	T	F	S
1	2	3	4	5	6	7
8	9	10	11	12	13	14
15	16	17	18	19	20	21
22	23	24	25	26	27	28
29	30	31				

NOVEMBER						
S	M	T	W	T	F	S
			1	2	3	4
5	6	7	8	9	10	11
12	13	14	15	16	17	18
19	20	21	22	23	24	25
26	27	28	29	30		

DECEMBER						
S	M	T	W	T	F	S
						1
						2
3	4	5	6	7	8	9
10	11	12	13	14	15	16
17	18	19	20	21	22	23
24	25	26	27	28	29	30

Fisheries Department of Western Australia

108 Adelaide Terrace, East Perth 6004, Tel (09) 325 5988



## HOW TO CATCH ABALONE

Always carry a gauge to measure the shell. Aluminium gauges for measuring abalone, crabs, rock lobsters and marron are available from tackle shops under the "mako" brand.

Get a loose-weave net diving bag or similar to carry your catch (available for a few dollars from diving shops). Use a broad-bladed screwdriver.

Mark the legal size of 6 cm on the shaft of the screwdriver so you can measure the size of the abalone before prising them off the reef.

Quickly and gently slide the blade of the screwdriver under the foot of the abalone, and quickly lever upwards to flick the abalone off the rock. If you miss the abalone will cling to the rock like grim death. In this case leave it and find another unprepared abalone. You won't get it off the rock without breaking its shell, and ruining its flesh.

When you have your bag limit of 20 abalone, take them home to shell them. Cleaning abalone is not permitted within 200 metres of the beach, so that abalone guts and shells don't spoil the place for other beach users.

Recreational divers are not permitted to use compressed air breathing gear to take abalone between Moore River and Cape Bouvard.

### FURTHER INFORMATION

For information on recreational fishing of abalone contact your nearest district fisheries office (listed in the WA country telephone book) or:

Fisheries Department of Western Australia, 108 Adelaide Terrace, East Perth 6004 Tel. (09) 325 5988

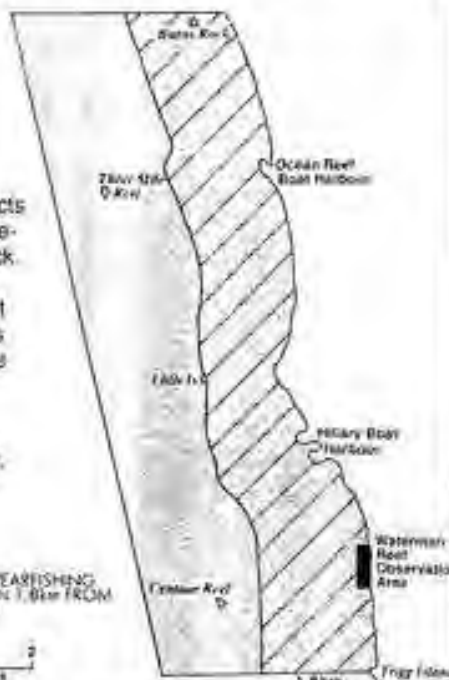
For Marmion Marine Park contact Department of Conservation and Land Management, Hillarys Boat Harbour. Tel. (09) 448 5800

## Marine conservation areas

There are two marine conservation areas that abalone fishers need to be aware of:

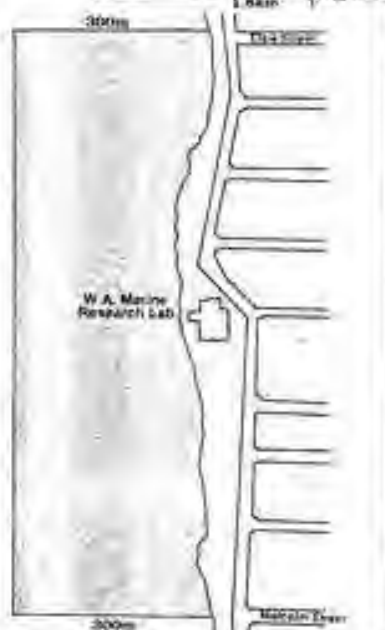
**MARMION MARINE PARK** protects the coastal marine environment between Trigg Island and Burns Rock. The abalone fishing season and rules apply in the Marine Park, but all other shellfish and reef animals such as crabs and sea urchins are protected.

You may only fish between 6 am and 10 am inside the Marine Park.



**WATERMAN'S REEF OBSERVATION AREA** is within the Marine Park, and surrounds the WA Marine Research Laboratories. The observation area is set aside so that students and scientists have a sample of a relatively untouched reef community to study. All reef animals are protected in the observation area, including abalone.

Line fishing is the only type of fishing permitted in the observation area.



## Cooking your catch

Abalone are a gourmet seafood, highly prized in South-East Asia and Japan, and becoming increasingly popular amongst Australians.

Fresh out of the water, they make a delicious seafood starter to any meal. Australians usually flambé them well with a steak mallet, and then lightly grill or fry them in a little butter or olive oil.

To tenderise abalone without beating, pressure cook them in a 2 cups of water for 20 minutes and allow them to cool in their own juices. They can then be used in any of your favourite seafood recipes.

### Abalone curry

#### INGREDIENTS (serves 4)

- 20 Roe's abalone, well scrubbed and sliced into strips.
- 1 onion, finely chopped.
- 6 cloves garlic, crushed.
- 3 cm fresh ginger, finely chopped.
- 2 stalks fresh lemon grass, or grated peel 1 lemon.
- 1/2 teaspoon blachan (shrimp paste) (available from chinese grocery shops).
- 4 teaspoons laos powder (available from chinese grocery shops).
- 4 teaspoons ground cumin.
- 1 cup fresh coriander leaf, chopped.
- 4 finely chopped fresh green chilis, or 1 teaspoon chilli powder (or less to taste).

- 3 cups thick coconut milk (or 1 x 375 ml can)
- 1 tablespoon light soy or Thai fish sauce
- 1 tablespoon peanut oil

#### METHOD

Grind onion, garlic, coriander leaf, blachan, and fresh ginger into a paste in a food processor or blender. Heat peanut oil in a pressure cooker, and gently fry onion mixture until soft and golden. Add abalone, chilis, soy sauce, coconut milk, and lemon grass and pressure cook for 15 - 20 minutes. Remove from heat, add remaining ingredients, stir well and pressure cook slowly (to prevent spicing sticking) for a further 15 - 20 minutes.

Add salt to taste, and serve with plain boiled rice and salads. □

OCTOBER DRYCASTING

As the long weekend was the first Sunday in the month Drycasting was moved to the second weekend.

A cross wind made things a bit tricky but casting overall was good, with George casting 165 meters, which was the longest cast of the day.

Artificial bait saw Eric and George both cast 130 metres.

In double handed accuracy yours truly hit the Bull's Eye. Heath top scored in this event with 125 points. Watch out dad, Heath is returning back to form. It's good to see Pilomena back at Drycasting and doing very well. especially in the double handed accuracy. (142 points)

It would be good to see a few more at Drycasting now the weather is warming up. Dad's how about bringing your Juniors and Mini-Juniors along. It's a good fun morning.

Next Drycasting day is November 5th at Yokine Reserve at 9 a.m.

MAL HEAD

OCTOBER CASTING RESULTS

WINNER OF THE DAY:	G. HOLMAN	231 POINTS
112 GRAMS:	G. HOLMAN	32 PTS
112 ART/BAIT	G. HOLMAN	26 PTS
D/H ACC:	H. HOLMAN	125 PTS
S/H ACC:	H. HOLMAN	29 PTS
JUNIOR WINNER	MIKE HEAD	194 PTS

NEXT CASTING DAY

WHERE .....	YOKINE RESERVE
WHEN .....	SUNDAY 9.00AM 5th NOVEMBER.1989.
EVENTS .....	112 GRAM LEVEL LINE 56 GRAM LEVEL LINE D/H ACCURACY S/H ACCURACY





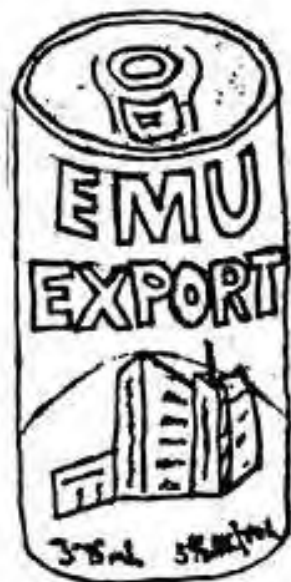
PAGE TEN

---

FIELD DAY COMPETITION

SECTION

- |  |             |         |          |
|--|-------------|---------|----------|
| 2. HEAVIEST SCALE FISH (1st 6 mth)                           | M. KELLY    | DHUFISH | 2.9 kg   |
| 3. MOST MERITORIOUS FISH                                     |             |         |          |
| 4. HEAVIEST SHARK (4.5kg min)                                | T. D'ALONZO |         | 4.6 kg   |
| 5. HEAVIEST MULLOWAY (1kg min)                               | T. D'ALONZO |         | 1.0 kg   |
| 6. HEAVIEST TAILOR (1kg min)                                 |             |         |          |
| 7. HEAVIEST SALMON (3kg min)                                 |             |         |          |
| 8. HEAVIEST TREVALLY (1kg min)                               |             |         |          |
| 9. HEAVIEST MACAERAL   |             |         |          |
| 10. HEAVIEST BAG SCALE FISH                                  | T. D'ALONZO | MIXED   | 27.60 kg |
| 11. HEAVIEST BAG MULLOWAY                                    |             |         |          |
| 12. HEAVIEST BAG TAILOR                                      |             |         |          |
| 13. HEAVIEST SCALE FISH S/H/ROD<br>4kg of 91g t/s line (max) |             |         |          |
| 14. HEAVIEST SCALE FISH<br>Other than sections 4-13          | T. D'ALONZO | SNOOK   | 1.37 kg  |



# CANS WANTED

Bring your aluminium cans along to General Meetings and give them to MALCOLM HEAD. He will change them into cash for the Club Social Fund.

OPEN COMPETITION  
SECTION

1. MOST MERITORIOUS FISH
2. HEAVIEST SHARK (4.5 KG MIN) - D. MAXTED - B/WHALER - 22 KG
3. HEAVIEST MULLOWAY (3 KG MIN) - T. D'ALONZO - 13.4 KG
4. HEAVIEST SALMON (3 KG MIN)
5. HEAVIEST DHUFISH
6. HEAVIEST TAILOR (1 KG MIN)
7. HEAVIEST SAMSON FISH - G. HOLMAN - 18 KG
8. HEAVIEST SCALE FISH S/H/ROD 4KG OR 9LB B/B LINE MAX
9. HEAVIEST PINK SNAPPER - H. HOLMAN - 5.75 KG
10. HEAVIEST TARWHINE
11. HEAVIEST MACKEREL - H. HOLMAN - 22 KG
12. HEAVIEST TREVALLY (SOUTHERN 1 KG MIN)
13. HEAVIEST TREVALLY (NORTHERN 1 KG MIN) - D. MAXTED - 6 KG
14. HEAVIEST SNOOK/PIKE (1 KG MIN) - T. D'ALONZO - 1.35KG
15. HEAVIEST SCALE FISH OTHER THAN SECTIONS 2-14 (2 KG MIN)  
- G. HOLMAN - SAIL FISH - 49 KG

**FILOMENA NOMINEES**

ALL FORMS OF:  
CONCRETE WORK  
MOSAIC FLOORING  
WALL & FLOOR TILING

Ring: Tony D'Alonzo  
328-4344



**RON WINTLE & CO**  
39 SEABROOK STREET,  
DIANELLA

SERVICE TO.....  
Domestic Refrigeration  
Airconditioning:-  
Domestic  
Automotive  
Ducted Airconditioning  
Washing Machine Repairs

ALL WORK GUARANTEED  
Discount for members



WE CALL OURS IT ALL

PAGE TWELVE

---

AAA DELEGATES MEETING

17 OCTOBER 1989

---

1. **AAA Presentation Night** - 7.30 p.m. Saturday 25 November - Sportsmen's Association, Stancliffe Street, Mt Lawley.
2. **Northcliffe Angling Club Fishing Competition** on 4 and 5 November 1989 - All welcome. (Yeagerup Beach to Fish Creek).
3. **Profit derived from the State Boating Titles** gave \$1,500 to the AAA W.A. Division.
4. **Clean-up Australia - Waterways** on Sunday 21 January 1990 nominated.  
AAA looking at co-ordinating a clean-up activity.  
Swan River looks well organised. It is suggested say Marmion Marine Park as a Project by AAA for participation by Clubs.  
Clubs to indicate if they will participate.
5. **Mandurah 500 Competition** - Run by Surfcasters on 13 and 14 January 1990.  
Request for publicity, i.e. posters to be distributed to Clubs.
6. AAA looking for a host club to run the **Drycasting Competition** for 1989/1990.
7. **Students information booklet** on fishing is going to print through the Fisheries Department for distribution through schools.  
Approximately 23,000 copies will be distributed by the year end.

# Dates to Remember...

W  
H  
E  
L  
P  
R  
E  
A  
D  
Y  
O  
U



## 1989-1990 SEASON

NOVEMBER.....To be decided at preceding general meeting  
DECEMBER.....to be decided at previous general meeting  
JANUARY.....LONG WEEKEND:- OPEN (Restricted boundaries)  
FEBRUARY.....To be decided at preceding general meeting  
MARCH.....LONG WEEKEND:- BLUFF CREEK  
APRIL.....ROTTNEST

## SUBS OVERDUE

Subs are now well overdue. If you have not paid yours please send a cheque to the treasurer.

# **XMAS PARTY**

**Sunday, December 10**

at the CLIFTON'S, Rousset Rd, Mariginiup,  
at 2.00 PM

BBQ Packs and Salads will be provided  
at \$5 a head  
(under 10 year old free)

Lollies, cool drinks supplied for children

*Father Christmas will be attending, so if  
you would like your child to receive a gift  
please bring something to the value of \$5.*

NOTES FROM EDITORS

Due to the lack of response for stories on fishing, the editors have been forced to make a trip to Steep Point so that next month we will have a fishing report.

Please send us some stories as we can not afford to go again next month.

Don't forget at our December meeting drinks will be supplied by the club. Please bring a plate.

Any member who may have a use for the gestetner previously used for the Reel Talk, should contact Owen Wintle on 444 3741 Any offers will be considered.

MAKE AN OFFER AND YOU OWN IT!!!

TROPHY DONORS

The Surfcasting and Angling Club wishes to thank the following trophy donors for their support:

COMMERCIAL

Jack Harvey's Tackle  
Fleet Cycles  
S. M. Cenge  
Hills Trading  
Halco  
R. J. Franklin  
Morley Glass  
Chas Alvey  
Campbells Sports Store

CLUB

Ken Jones  
Basil Marsh  
Bill Utting  
Malcolm Head  
Heath Holman  
D'Alonzos  
George & Kaye Holman  
Eric Parker  
Graham Reeley  
Sam Cook  
Eric Bombardieri  
Charlie Cadie  
Osborne Family  
Bill Harries  
Ron Wintle  
Jim Strong

SPECIES	LEGAL SIZE (mm)	DAILY BAG LIMIT	1.	2.	3.	4.
ABALONE, Greenlip	140	30 combined				
ABALONE, Brownlip	140					
ABALONE, Rock	60	20				
BARRAMUNDI	-	5				
BREAM, Black	250	30				
BREAM, Yellowfin	250	-				
COBBLER	230	-				
COCKLES	-	9 Litres				
CORAL TROUT	450	10				
CRAB, Brown mud	120	30 combined				
CRAB, Green mud	150					
CRAB, Blue manna	127	24				
DOLPHINFISH (Mahi Mahi)	-	3				
FLATHEAD, Bar-tailed	300	-				
FLATHEAD, Blue-spotted	300	-				
FLATHEAD, Long-spined	300	-				
FLATHEAD, Marbled	300	-				
FLOUNDER	230	-				
GARFISH	230	-				
GROPER, Baldchin	400	10				
GROPER, Western Blue	400	1				
HERRING, Australian	180	-				
JEW FISH, Westralian	500	5				
LEATHERJACKET	250	-				
MACKEREL, Blue (Common)	150	-				
MACKEREL, Broad-barred spanish	760	5 combined				
MACKEREL, Narrow-barred spanish	760					
MACKEREL, Striped	-	-				
MACKEREL, Spotted spanish	500	-				
MACKEREL, Wahoo	760	-				
MARRON	76	20				
MULLET, Sea	240	-				
MULLET, Yelloweye	230	-				
MULLOWAY	330	5				
MUSSELS	-	20 Litres				
NANNYGAI	230	-				
PIKE, Long-finned	330	-				
PRAWN, Western King	76	9 Litres combined				
PRAWN, School	50					
RED EMPEROR	280	10				
ROCK LOBSTER, Southern	98.5	8 combined				
ROCK LOBSTER, Tropical	-					
ROCK LOBSTER, Western	76					
SALMON, Australian	300	5				
SAMSON FISH	600	10				
SKIPJACK TREVALLY	300	-				
SNAPPER, Pink (west coast)	410	10				
SNAPPER, Pink (south coast)	280	10				
SNAPPER, Queen (Blue Morwong)	300	10				
SNAPPER, Red	230	-				
SNAPPER, North-west	280	10				
SNOOK	280	-				
SOLE	200	-				
SWEEP	230	-				
TAILOR	250	-				
TARWHINE	230	-				
TROCHUS	65	-				
TROUT, Rainbow or Brown	300	10				
TUNA, Southern Bluefin	-	5				
WHITING, King George	250	30				
WHITING, Western Sand	220	-				
WHITING, School	220	-				

Information current at November 1988 - Fisheries Department of Western Australia



**1. GROUP BAG LIMIT:** A total of ten per day of any combination of these species.



**2. ACCUMULATED BAG LIMIT:** If while fishing you fish for several days continuously on a boat you may accumulate the bag limits for those species. Bag limit = 10 fish aboard a daily bag limit.



**3. LICENCE REQUIRED:** You must have a recreational fishing licence if you wish to catch these species (available from the Fisheries Department).



**4. CLOSED SEASONS:** A closed season may apply to these species. Dates sometimes vary from year to year. Watch the press for details or contact the Fisheries Department.

### HOW TO MEASURE YOUR FISH

Use an accurate gauge and follow these diagrams. Put back the gills and fins for next season.

#### OPEN SEASONS

Rock Lobsters: 15 November to 30 June inclusive. The Abrolhos Islands open on 15 March.  
 Trout: 1 September to 30 April. Some waters are open all year.  
 Abalone: All year except in the metropolitan area.  
 The metropolitan season is usually opened between November and mid-January, but this may change from year to year. Watch the newspapers or contact your nearest Fisheries Department office for advice.  
 Prawns: The Swan-Canning estuary is open from 1 November to 31 July. The Serpentine, Doodlakine, Harvey, and Murray Rivers are closed from 1 May to a date between 1 November and 1 December which is decided each year. Watch the press or contact the Fisheries Department for details.

GARFISH



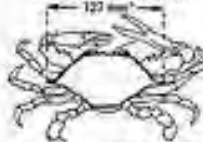
COBBLER



OTHER FISH



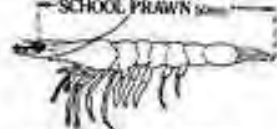
BLUE MANNA CRAB



ROE'S ABALONE



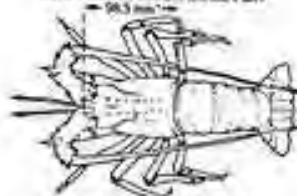
KING PRAWN



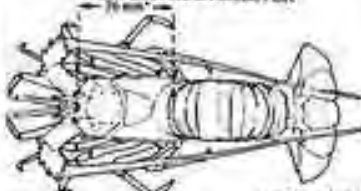
SCHOOL PRAWN



SOUTHERN ROCK LOBSTER



WESTERN ROCK LOBSTER



\* minimum legal size